

COMFOUR®

Bridge instead of dentures –
dental prosthesis with feel-good
factor

patients.camlog.com



Dear reader,

Your appearance, smile and well-being are an important part of your quality of life. Beautiful white teeth underline your attractiveness and vitality.

Teeth can be lost for a number of reasons. This loss not only affects your appearance, speech and eating, but can also lead to problems of the entire organism. Implants can be used to replace teeth both functionally and esthetically. Implants are also used in edentulous jaws to stabilize prostheses.

The COMFOUR Treatment Concept can be one solution for patients with poorly fitting full dentures or teeth with severe periodontal damage. The special feature of this concept is that you receive firmly screw-retained bridges on implants. This lets you eat and talk the same as with your own teeth.

Further advantages of the restoration are that you have more space for the tongue and can also enjoy food again to the fullest, as the palate of the upper jaw remains unrestricted.

The scientifically based treatment concept allows for immediately available, comfortable and fixed restoration. The reconstruction of a complete row of teeth is firmly inserted on four or six implants - a definite plus in quality of life.

This brochure gives you an overview of the way COMFOUR works and an example of the treatment procedure. Ask your dentist or your implantologist for detailed advice on the options in your individual case.

For reasons of easier readability, gender-specific differentiation has been omitted in part in this brochure. Corresponding terms always apply to all genders in the interests of equal treatment.

Content

The COMFOUR Concept - a definite plus in quality of life	6
Procedure of the COMFOUR Treatment	8
The benefits of a COMFOUR Restoration at a glance	11
Care	12
Dental implants from Camlog stand for quality Made in Germany	15





The COMFOUR Concept - a definite plus in quality of life

Teeth fulfil a number of functions. Primarily they are responsible for breaking down food and contributing to the formation of speech sounds. Teeth also serve to preserve the jawbone. Every tooth is made up of a root and a crown. When a tooth is lost, an implant can take on the general function of the natural tooth root. A dental implant can be compared to a small screw inserted into the jawbone. The bone grows around the implant so that it is firmly anchored in the jawbone. Depending on the indication, connection elements, so-called abutments, and the individually fabricated dental prosthesis, are attached to the implant.

If teeth of a whole row of teeth are missing, the chewing pressure on the jaw is missing. As a consequence, the jawbone continues to deteriorate. The prosthesis no longer sits correctly and impairs food intake and speech control. For cases such as these, there is a scientifically based treatment concept for stabilizing prostheses.

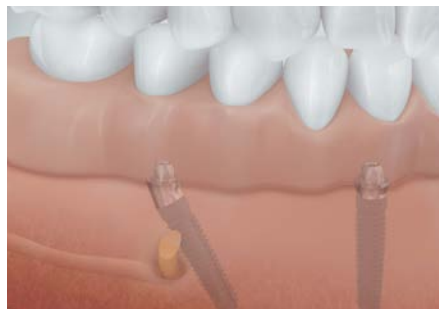
As advanced bone resorption limits the amount of bone available for fixing the implants and as anatomically critical structures such as the nerve in the lower jaw or the max-

illary sinus in the maxilla have to be taken into account when placing implants, the posterior implants are placed at an angle in the treatment concept with COMFOUR as a rule. Depending on the situation, this avoids complex and cost-intensive surgical measures such as the reconstruction of the jawbone. Compared to straight placed implants, angled implants can provide a better distribution of force. This means that the chewing forces can be supported over a larger area.

Depending on the initial situation, the treatment concept with COMFOUR in most cases allows you to leave the practice on the same day with firmly screw-retained teeth in the form of a bridge. Loose-fitting dentures are now a thing of the past. Talking, laughing, eating, the most natural things in life are finally possible again with COMFOUR - a real plus in comfort and assurance.



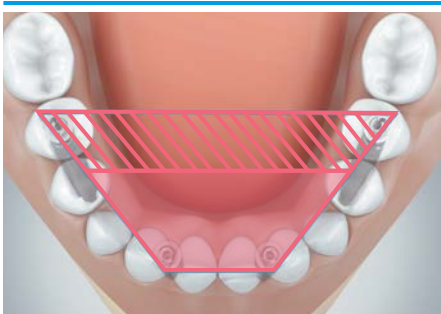
For edentulous jaws, the COMFOUR Concept offers genuine added value in terms of quality of life.



In the treatment concept with COMFOUR, anatomical structures, such as the mandibular nerve, are protected by implants inserted at an angle.



In cases of reduced bone availability in the upper jaw, cost-intensive bone augmentation can be avoided with the aid of an angled implant.



Two implants placed at an angle create a larger load area than implants that are placed straight.



With just four implants in the lower jaw, a denture can be firmly screw-retained using the COMFOUR Treatment Concept. Poorly fitting dentures are now a thing of the past.



The incorporated, firmly screw-retained bridges in the lower jaw exemplarily on four implants, in the upper jaw exemplarily on six implants.

The five steps of COMFOUR Treatment

1

Diagnosis

After an extensive examination of your oral and jaw situation, your dentist will advise you on the treatment concept for fixed dentures with COMFOUR. You will have the chance to discuss the type of reconstruction with your dentist and the dental technician and express your wishes for your new dental prosthesis. Then you will be informed about the individual treatment steps.

2

Pretreatment

The COMFOUR Treatment Concept is designed to ensure that the therapeutic dentures are available at the time of surgery. Three-dimensional X-ray images (DVT/CT) and the impressions of your two jaws, as well as a facial arch transfer, are taken to provide implant planning and for fabricating your dental prosthesis. Depending on the degree of difficulty, a kind of template can be fabricated in the laboratory for the implantation, which helps the dentist to insert your implants precisely into your jaw while protecting anatomical structures. Depending on your individual situation, your clinician will decide whether a template is required or not.

3

On the day of surgery

When you arrive in the dental practice you will be prepared for surgery. Your dentist will have explained to you during the preparatory discussion what you should pay attention to on the day of surgery. Modern anesthetic and implant techniques ensure that surgery is as stress-free as possible. The length of the intervention can vary and depends on your individual situation. The implants are inserted in their exact positions without requiring any further complex surgical measures for bone augmentation.

After the implants have been placed, the therapeutic restoration prepared in the laboratory for the day of surgery can be inserted. This not only saves time and costs, but lets your implants heal gently, without a removable prosthesis to impair healing. As a rule, you will leave the dental practice with a fixed screw-retained therapeutic dental prosthesis with which you will feel absolutely safe.



4

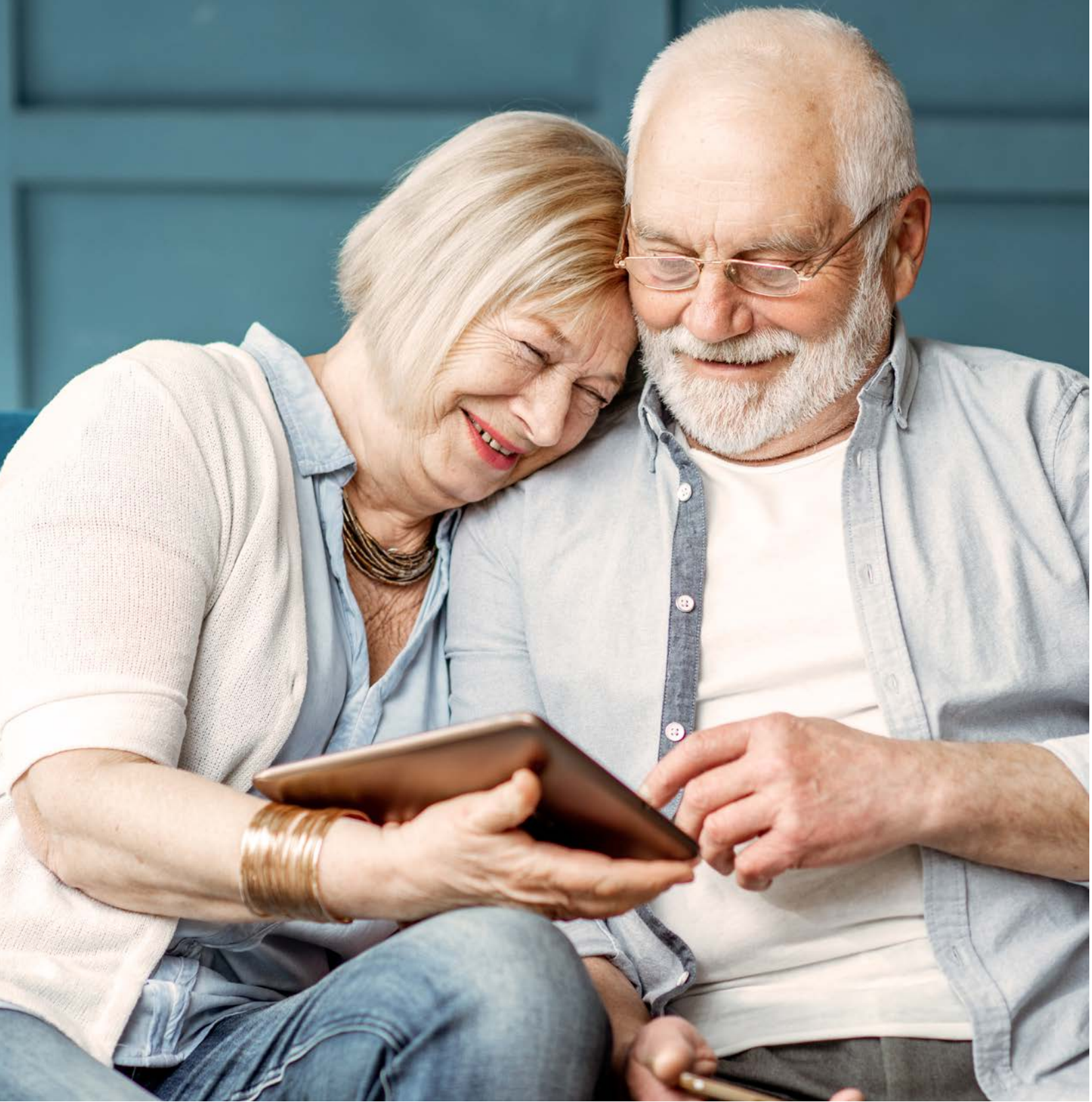
Healing phase

Your implants and the new teeth require regular check-up appointments to review both function and fit. During the first few weeks of the healing phase, the implants are loaded gently. The gums change during this period. Your therapeutic bridge is adapted to the current gum situation if required.

5

The final restoration

Depending on the progress of healing, impressions of the jaws and implants are taken after a few months to prepare your final restoration. Your new bridge is then fabricated in the laboratory. Not only is the perfect fit checked during a try-in appointment, but also the esthetics and function of the bridge. The teeth are given their final "touch" and are firmly screw-retained on the implants. You can laugh, talk and eat again with ease. A comfortable solution for a plus in quality of life.



The benefits of a COMFOUR Restoration at a glance



Quality of life in a single day

With the COMFOUR Treatment Concept, edentulous patients usually have the option of receiving a convenient and fixed restoration immediately on the day of surgery. The treatment concept offers a significant increase in quality of life without the need for complex surgical bone augmentation measures. Firmly anchored teeth that allow you to eat, drink and talk perfectly again.



High wearing comfort

Many patients have an unsatisfactory solution with their conventional full dentures. Eating and speech are difficult, the poor fit of the prosthesis causes pressure points, which causes the bone to deteriorate further. Moreover, social competence suffers. A palatal plate, which is necessary for full dentures in the upper jaw, can make articulation difficult and impair the sense of taste. With the COMFOUR Treatment Concept, the firmly screw-retained bridge ensures a high level of wearing comfort, an esthetic appearance and a significant increase in well-being.



Gentle and cost-effective

Treatment with the COMFOUR Concept is particularly gentle, as the angled placement of the implants in the posterior jaw allows sensitive areas to be bypassed even if the bone has already deteriorated considerably. Thanks to this special treatment protocol, the implants are usually placed without complex and cost-intensive procedures such as additional bone augmentation.

Care

Like natural teeth, implant restorations also need to be thoroughly cared for. As the implant is firmly anchored in the jaw, the care measures are focused on the transition areas of the gingiva to the prosthesis and the prosthesis itself. Good cleaning and regular check-ups ensure the long-term success of an implant restoration.

Gingival inflammation and gingival pockets may occur if implant-supported prostheses are not sufficiently cared for or cleaned of plaque. This means that the implants are less well protected and can be damaged in the long run. Avoid this risk by regular care! Next to daily oral hygiene with a toothbrush

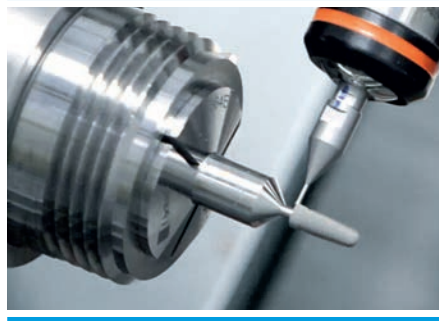
and other aids for cleaning the bridge base, professional cleaning in the dental practice is the best investment for the durability of your implants.

Let your dentist and his practice team give you comprehensive advice on dental care, cleaning aids and their use. Regular check-ups serve to secure the long-term success of your implants and to make sure you are pleased with your implant restoration for a long time.





All Camlog products are manufactured by ALTATEC GmbH, a company of the Camlog Group in Wimsheim, Baden-Wuerttemberg, Germany.



Dental implants from Camlog are high-precision medical devices. The manufacturing process is monitored throughout.



All products are manufactured, inspected and packaged in a clean room by qualified professionals.

More information
about dental
implants and
Camlog can be
found on our
website.

<https://patients.camlog.com/>



Dental implants from Camlog stand for quality Made in Germany

The manufacturers of medical devices bear great responsibility. Camlog is a leading manufacturer of dental implants and a reliable partner for dentists, oral surgeons, orthodontic surgeons, and dental technicians.

We pay particular attention to the processing of materials compatible with the body, the achievement of excellent manufacturing quality and conducting full production inspections for the safety of patients, dentists, surgeons, dental professionals and dental technicians.

The Medical Devices Act places high demands on the safety and functionality of medical devices. Camlog also makes the quality promise to only develop and manufacture products that comply with state-of-the-art technology and scientific research as well as the relevant standards for medical engineering.

This consistent attention to quality is reflected by the successful certification of our quality management system in accordance with ISO 13485. The high product quality is also confirmed by CE certification. Sustainable production and compliance with environmental laws are part of our corporate philosophy. We implement this with a certified environmental management system according to EMAS.

All Camlog products are manufactured in Wimsheim, Baden-Wuerttemberg, by qualified specialists, quality "Made in Germany". The implants are made of pure titanium. This material is extremely stable and is highly biocompatible.

Uncomplicated handling, high precision and reliability are hallmarks of all Camlog products. This is our contribution to achieving predictable and reproducible, functional, esthetic, and long-term stable treatment outcomes.

Your personal implant passport

Following implantation, your practice team will hand you your personal implant passport. This documents the quality implants and abutments used for you and allows tracing by batch (LOT) numbers. Please keep the implant passport in a safe place. It certifies the use of high-quality medical devices.

The best people to contact for all questions about dental implants are your dentist and the specialist surgeon with their practice teams.

Headquarters

CAMLOG Biotechnologies GmbH
Margarethenstr. 38
4053 Basel
Switzerland

